



COMPLETELY CUSTOM • TOTALLY HANDMADE • PEARL DRUMS



## The Concept

For most players, a custom instrument represents a once in a lifetime opportunity. The next step in a career that will take your sound, and your playing, from good to great.

But when you take a look at what most companies call a custom drumset, you'll see one shell material, available in one thickness, with a short list of sizes and colors. Most simply purchase a stock shell from one company, import the hardware from another, assemble and paint it for you, having little control over the quality. Sounds more like custom assembled than custom made. And when you think about it, how much different can one drum set sound from another, when they basically all use the same shell?


Masterworks is as different from this as day is to night. These drums are for the serious drummer who realizes individuality offers the key to the highest success. Masterworks drums are truly handmade, one at a time to your specifications. An elite group of Pearl master craftsmen construct your Masterworks kit with great attention to even the smallest of custom details. From our wood specialists, that visually inspect and choose each individual wood ply at the mill to insure the absolute ultimate of quality standards, to the custom paint artisans that apply an exclusive labor intensive thirty-one step custom finish in a truly endless array of colors and styles, Masterworks drums represent all that is possible for the professional drummer.

Masterworks is about choices for the discriminating musician. Choice like North American Maple, Scandinavian Birch and African Mahogany. Three highly prized woods for shell construction, not just the same shell everyone else custom paints. Choices like four thickness options, shell composites of more than one wood, hardware plating options, full control over sizes, unlimited colors and finishes including exotic wood outer plies. Our Masterworks program offers you so many detailed options that each drum in your kit can be custom tailored and optimized for your style of play. If this is starting to sound completely different from what other companies call a custom drum set, then you see the concept behind Masterworks. At Pearl, we are dedicated to producing the finest drums in the world at our new Masterworks Custom Shop facility. Hand Made. Completely Custom.

If you're ready...we hope to build a set for you.








The creation of a truly remarkable acoustic instrument starts with knowledge and mastery gained only through years of experience in the art of drum making. Since our humble beginnings in 1946, the dream to someday offer the finest completely custom acoustic drums ever produced, individually handmade to order for the most discriminating drummers, was always our ultimate goal.

Someday is now.

Pearl's all new Masterworks Custom Shop facility has been created to seamlessly blend the artisan qualities and wisdom of hand workmanship, with state-of-the-art technology and precision of the finest custom built machinery. You will find no other group of drum craftsmen like this in the world. Their dedication, experience, knowledge, and pride shows in every drum produced bearing the Masterworks badge. No assembly line rules or boundaries, no mass production compromises, only the ultimate perfection solely achieved through the individual attention of a master craftsman.


"Total Manufacturing".



Masterworks drums offer a concept truly unique in the drum industry. From ingot melting and die-casting of metal tension lugs, to ply selection, patented forming and hand finishing of the shell that receives them, every part possible of a Masterworks drum has been meticulously engineered and manufactured by a Pearl craftsman. Where other companies simply buy mass produced parts and shells to assemble and paint, we choose instead to control the quality of every part of these outstanding drums. This is the way a true custom drum should be made. It's the way all Masterworks drum are made.



Completely Custom • Totally Handmade • Pearl Drums



Details. Masterworks drums are painstakingly constructed with the utmost attention to even the finest of details. From the custom engraved brass air vents and exotic wood exterior finishes, to the 2" wide bass drum hoops with rubber isolated recessed claws, no other drum series has ever offered this level of exacting handmade craftsmanship. Your Masterworks kit is specifically designed by you from a myriad of choices. You control every size drum, the woods or wood combinations from which the shells are made, the thickness, finish and hardware of every drum in your kit. You have unprecedented control to fine tune the sound of your kit to a specific style of music, or to build your vision of the ultimate acoustic instrument. Either way, Masterworks drums are as individual as the players that play them and represent the most complex drum series ever offered.



## Choosing the Wood for the Shell

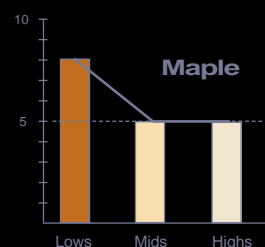
Few factors influence the sound of a drum more than the choice of wood used in its construction. Through our close mill relationships and on-staff wood specialists, only the finest pristine wood plies, specifically hand-selected through an arduous selection process, are used to create a Masterworks shell. Each ply is graded, sorted and left to age until fully cured to insure a consistent, natural, full bodied tone. Masterworks offers you the ability to custom configure each drum in your set, using different woods and thicknesses, should you so choose. This is in sharp contrast to many so called custom drums that offer only one shell. The three most prized woods used over the history of drum manufacturing are Maple, Birch and Mahogany. Each offers brilliant

inherent characteristics that beautifully flavor the tone of the drum. This full palette of choices, and the ability to manufacture hybrid shells using a combination of these woods, allow Masterworks drum sets to be individual and fine tunable to the specific needs of each player. The following pages will give you a better idea of the sound characteristics of the many materials, thickness and size options available, and give basic recommendations for specific styles of music or the popularity of one drum for a specific application. Whether you choose one shell and thickness for your entire kit, or choose each drum to be different, your Masterworks kit will represent your vision of the ultimate acoustic instrument.





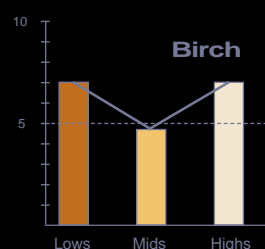
Maple has been a favorite choice of drum manufacturers since the late 1700's. Its grain is a beautiful canvas for transparent finishing techniques and its tone is ideal for general purpose, all encompassing applications. Our North American Maple, like all of the woods used for Masterworks drums, is hand-selected to meet stringent requirements for proper density, age, and consistency of grain and color. Maple offers a smooth, warm, well rounded tone, with equal amounts of hi-end attack and mid-range body, and an excellent low-end punch. Most drum manufacturers offer some form of 100% Maple drum today as it has become the standard of the industry for hi-end drum sets.



*Features slightly boosted lows with smooth mid and high frequencies. Ideal for all around applications.*



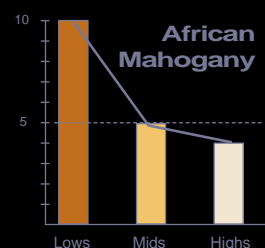
Birch drums have gained an almost cult following over the years which started around the 1970's. Their "naturally EQ'ed sound" offers the perfect alternative to the overall smoothness of Maple. Many professional players today prefer the sound of Birch to any other material in use for the manufacture of drums. Our prime Scandinavian Birch offers a slightly boosted hi-end cut, a smooth, mellow mid range and a deep low end presence. Many popular Birch shell drums have found their way to recording studios where they are a favorite of both the player and engineer. Their sound translates equally for both live and recorded situations as Birch drums are a great choice for any application that requires extra presence and cut.



*Features boosted high frequencies, slightly reduced mids, and a good low end punch. Ideal for applications requiring extra presence and cut.*



Mahogany was the industry standard for drum shell manufacture for over fifty years and one listen will tell you why. Our supreme quality African Mahogany is extremely rich in low-end frequencies, with beautifully smooth mids and a slight roll-off in the higher register. Drums made from African Mahogany have warmth and body that sets them apart from all others. Few companies today offer this excellent wood for drum shells simply because its porous exterior is extremely difficult to finish and it costs more than Maple. Without question, if your main requirements are "bottom" and punch, African Mahogany should be your wood of choice.



*Features extremely rich low end frequencies, with beautifully smooth mids and a slight roll-off in the higher frequencies. Ideal for applications requiring ultimate "bottom" and punch.*



The beauty of Masterworks is the ability to custom configure a kit down to the wood plies used for the shells. A composite shell, featuring more than one wood, is a great way to blend the characteristics offered by different materials. For instance, you may choose outer plies of Maple or Birch for their ease of finishing, beautiful grain and sound characteristics, and inner plies of African Mahogany to boost bass and low end punch. While this is a very popular Masterworks composite, remember there is no wrong way to configure your shell and each drum in your kit can be different if you so choose. The only requirement is that plies must be specified in groups of 2, as in 2 outer plies of Maple plus 2 inner plies of African Mahogany, for a 4 ply shell.





PEARL'S EXCLUSIVE  
HEAT COMPRESSION SHELL MOLDING SYSTEM

Masterworks drum shells are the most precisely crafted, exacting air chambers available within the drum industry today. To understand why, you have to look no further than the process by which the shell is made. Pearl's exclusive **Heat Compression Shell Molding System** offers the answer and represents state-of-the-art for shell quality, sound, longevity, and consistency. By stringently controlling every aspect of the shell

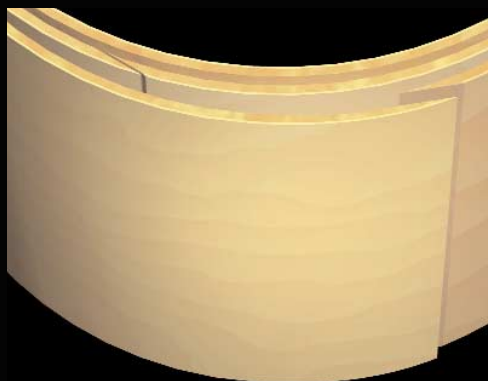
manufacturing process, there simply is no reason to tap the shell and give it a note. Every Masterworks shell of the same size, constructed of the same material, in the same thickness, will sound the same when tapped. If you have variation, you simply do not have consistency.

Masterworks drum shells begin with hand selected, fully aged wood plies, cut to size with tapered scarf joints at each end. Scarf joints allow the seams to completely overlap, totally eliminating gaps and dead spots left by butt seam methods, common with other shell forming processes. Each ply is coated with a patented adhesive formulation specifically engineered by Pearl to dry to the same density as the

wood it binds. The plies are then hand formed and inserted into a hydraulic compression die, custom built for each size drum. The plies are then compressed, using both internal and external continuous force equal to 154 lbs of pressure per square centimeter, while being heated to the boiling point until cured, to insure the adhesive enters every pore of the wood. No

other system uses this perfect combination of extreme heat and pressure to insure a perfect drum shell. Many systems simply use inflatable air bags under low pressure to form shells, while others choose to buy completed shells manufactured by others for their drums, with no control over quality. At Pearl, we understand the shell is the heart, soul and nucleus of the overall sound of the

drum. Our Heat Compression Shell Molding System has been refined with over fifty years of experience in the art of drum making. Today's Masterworks drum shells represent all that is possible and without doubt produce a tone, clarity and presence second to none.




*Scarf Joint Seams*

### *HC/sms*

*Our Heat Compression Shell Molding Process combines extreme heat and 154 lbs of pressure per square centimeter to produce the most painstakingly handcrafted shell available.*



## Shell Thickness Options

A close-up photograph of a drum shell, showing the curved wooden structure. The image highlights the thickness of the shell, with a black arrow pointing to the edge of the shell. The wood grain is visible, and the lighting creates a warm, golden glow. The background is dark, making the shell stand out.

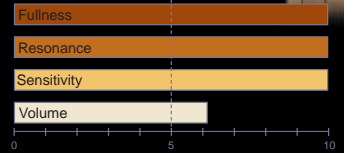
The overall thickness of a drum shell effects how readily energy is transferred from the heads. This single factor has a profound affect on both the tonal characteristics and projection of the drum. Thinner shells allow the wood to fully resonate and maximize its total contribution to the overall sound. As a shell increases in thickness, it is less resonant but louder, with more and more of its tone projected to the audience. With Masterworks, the choice is yours. There are four thickness options from which to choose, and your kit can feature all one thickness or you can specify each drum in your kit.



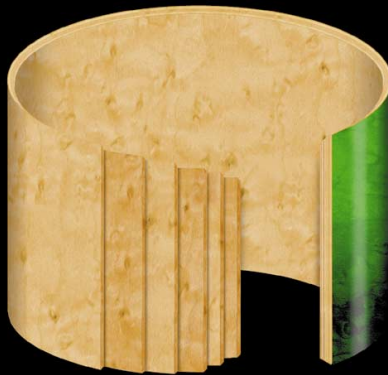
Thin shell drums have become extremely popular in recent years as their sound offers the best “near field” or player’s experience. Our 4 ply, 5mm shell enables relatively easy energy transfer from the heads to the shell, thus causing the shells to fully vibrate. This vibration imparts a very rich, warm “wood” tone to the overall sound that can be most appreciated close to the kit while it’s played. This effect is also great for recording where miking techniques can capitalize on the warmth

and natural tone of the instrument. Most manufacturers offer a thin shell hi-end drum series, and Pearl’s Masters Custom Series drums are a perfect representation. Our 4 ply, 5mm shell also features an extra 4 ply, 5mm reinforcement ring at both top and bottom to help strengthen the shell and add support at critical head contact points for stability.

### Thin



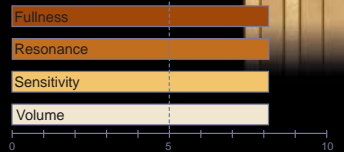
*Thin shells drums offer great resonance and maximum tone that can be most appreciated in near-field applications, especially in recording.*



Medium thickness drums, as with our 6 ply, 7.5mm Masterworks shells, have slightly greater stiffness and resist some of the energy transfer from the heads. With slightly less vibration, a trade-off is achieved allowing the sound to be slightly “cooler” than a thin shell drum, but with greater volume and projection. These drums represent a great choice for all around, general purpose applications, offering a warm, full bodied wood tone, with great

attack, loudness and presence. Medium thickness shells may offer the best of both worlds providing the perfect compromise between resonance and volume.

### Medium



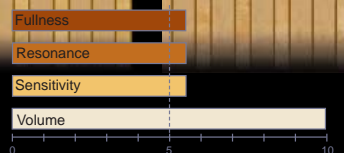
*Medium thickness shells are ideal for general purpose applications and/or situations requiring more “horsepower.” They offer a very good compromise between volume and resonance.*



Thicker shell drums are extremely “efficient” and allow most of the player’s energy to be focused through the heads directly to the audience. Since the shell provides greater mass, less volume is lost through the shell in the form of resonance. They offer good tone and warmth but at reduced levels compared to their thinner shell counterparts. These drums are ideal for coliseum-type venues and other applications requiring high sound pressure levels and ultimate

volume. Masterworks drums are available in both an 8 ply, 10mm thickness and a 10 ply, 12.5mm thickness. Snare drums made in these thicknesses rival metal snare drums in intensity and projection, providing a great cannon-like crack with extreme volume.

### Thick



*Thick shells are extremely “efficient” and provide ultimate volume and projection. These drums are ideal for any application requiring high sound pressure levels with maximum cut.*

# Shell Selection Guide

The charts shown on these pages list all available size, thickness and wood options available to you while designing your Masterworks kit. There are no rules to follow when it comes to choosing sizes, but we have included some comments and common applications to let you know the popularity of certain size drums and if they are preferred by a certain style of music. All sizes are shown as depth x diameter. The words "Standard", "Alternative", "Deep" and "Power" are used to describe the common sizes you may find in a pre-packaged hi-end kit. "Standard" size refers to the classic drum sizes that were the main drums available until the 70's. These sizes are sometimes called "Jazz" sizes today and are still very

popular. "Deep" refers to sizes that are usually 2" shorter than their diameter for toms. These sizes are extremely popular today for all styles of music and have become the new industry standard as featured in most drumset packages. "Power" size drums became popular in the 80's as the perfect size for Metal or Hard Rock music. They are sometimes called "Square" sizes today. "Alternative" size drums have become widely popular in recent years as they offer the perfect alternative between standard and deep size drums for many players. When choosing sizes, remember the size, wood and thickness of the shell all work together to create the sound of the drum.

Bass Drums		Available Thickness and Woods				Plies ( ✓ Maple ✓ Birch ✓ Mahogany )
Size	Model	4 ply 5mm	6 ply 7.5mm	8 ply 10mm	10 ply 12.5mm	Common Applications and Comments
10"x18"	BD1018	✓✓	✓✓	✓✓	✓✓	Ideal effects bass drum for all styles of music. Very sensitive with controlled lows.
11"x18"	BD1118	✓✓	✓✓	✓✓	✓✓	Ideal effects bass drum for all styles of music. Very sensitive with additional lows.
12"x18"	BD1218	✓✓	✓✓	✓✓	✓✓	Main or effects bass drum. Works well in quieter sessions.
13"x18"	BD1318	✓✓	✓✓	✓✓	✓✓	Main or effects bass drum. Greater depth and increased lows, works well in all styles.
14"x18"	BD1418	✓✓	✓✓	✓✓	✓✓	<b>Standard</b> - The classic "Be Bop" size. Excellent tone to depth ratio, full sensitive response.
15"x18"	BD1518	✓✓	✓✓	✓✓	✓✓	<b>Alternative</b> - Contemporary size for Jazz and all styles of music, deeper tone with added projection.
16"x18"	BD1618	✓✓	✓✓	✓✓	✓✓	<b>Deep</b> - Great for Crossover Jazz and all other styles. Full bodied tone, superb tone-to-depth ratio.
17"x18"	BD1718	✓✓	✓✓	✓✓	✓✓	Outstanding for all styles of music. Full low-end tone.
18"x18"	BD1818	✓✓	✓✓	✓✓	✓✓	<b>Power</b> - Great for all styles of music. Full low-end tone and projection with excellent sensitivity .
10"x20"	BD1020	✓✓	✓✓	✓✓	✓✓	Ideal effects bass drum for all styles of music. Very sensitive with controlled lows.
11"x20"	BD1120	✓✓	✓✓	✓✓	✓✓	Ideal effects bass drum for all styles of music. Very sensitive with additional lows.
12"x20"	BD1220	✓✓	✓✓	✓✓	✓✓	Main or effects bass drum. Added depth and lows works well in all musical settings.
13"x20"	BD1320	✓✓	✓✓	✓✓	✓✓	Main or effects bass drum. Greater depth and increased lows, works well with all styles.
14"x20"	BD1420	✓✓	✓✓	✓✓	✓✓	<b>Standard</b> - Classic "Club Date" size. Great tone; all around sound for any musical situation.
15"x20"	BD1520	✓✓	✓✓	✓✓	✓✓	<b>Alternative</b> - Contemporary size with warm deep tone and added projection.
16"x20"	BD1620	✓✓	✓✓	✓✓	✓✓	<b>Deep</b> - Added depth produces wonderful lows with full projection. The original crossover size for all music.
17"x20"	BD1720	✓✓	✓✓	✓✓	✓✓	Full low-end response. Complements all styles of music.
18"x20"	BD1820	✓✓	✓✓	✓✓	✓✓	<b>Power</b> - Maximum low-end tone and projection with excellent sensitivity. Great for all styles of music.
10"x22"	BD1022	✓✓	✓✓	✓✓	✓✓	Ideal effects bass drum for all styles of music. Very sensitive with controlled lows.
11"x22"	BD1122	✓✓	✓✓	✓✓	✓✓	Ideal effects bass drum for all styles of music. Very sensitive with augmented lows.
12"x22"	BD1222	✓✓	✓✓	✓✓	✓✓	Main or effects bass drum. Added depth and lows complements all musical settings.
13"x22"	BD1322	✓✓	✓✓	✓✓	✓✓	Main or effects bass drum. Greater volume and increased lows, works well with all styles.
14"x22"	BD1422	✓✓	✓✓	✓✓	✓✓	<b>Standard</b> - Classic bass drum size. Good low-end tone and projection; a very historic sound.
15"x22"	BD1522	✓✓	✓✓	✓✓	✓✓	<b>Alternative</b> - Modern size for greater projection and improved bottom end. Great for all styles of music.
16"x22"	BD1622	✓✓	✓✓	✓✓	✓✓	<b>Deep</b> - The choice of many of today's professional players; perfect for all styles. Superb tone-to-depth ratio.
17"x22"	BD1722	✓✓	✓✓	✓✓	✓✓	Powerful projection with full low-end response and good sensitivity. Complements all styles of music.
18"x22"	BD1822	✓✓	✓✓	✓✓	✓✓	<b>Power</b> - Maximum punch, low-end tone and projection. The contemporary standard.
10"x24"	BD1024	✓✓	✓✓	✓✓	✓✓	Ideal effects bass drum for all styles of music. Very sensitive with controlled projection.
11"x24"	BD1124	✓✓	✓✓	✓✓	✓✓	Ideal effects bass drum for all styles of music. Very sensitive with enhanced low end.
12"x24"	BD1224	✓✓	✓✓	✓✓	✓✓	Main or effects bass drum. Added depth and lows works well in all musical settings.
13"x24"	BD1324	✓✓	✓✓	✓✓	✓✓	Main or effects bass drum. Improved low-end imaging for all styles.
14"x24"	BD1424	✓✓	✓✓	✓✓	✓✓	<b>Standard</b> - The classic size for both Big Band and Rock music. Fantastic tone-to-depth ratio.
15"x24"	BD1524	✓✓	✓✓	✓✓	✓✓	<b>Alternative</b> - First choice for its extra projection and deeper tone. Fits all styles of music.
16"x24"	BD1624	✓✓	✓✓	✓✓	✓✓	<b>Deep</b> - Exceptional low-end tone and projection. A very solid sound for most musical styles.
17"x24"	BD1724	✓✓	✓✓	✓✓	✓✓	Great projection with outstanding low-end tone. An asset to any musical style.
18"x24"	BD1824	✓✓	✓✓	✓✓	✓✓	<b>Power</b> - Extreme projection with full-bodied tone. Top choice of professionals in virtually all styles of music.
10"x26"	BD1026	✓✓	✓✓	-	-	Ideal as an effects bass drum for all styles of music. Very sensitive with controlled lows.
11"x26"	BD1126	✓✓	✓✓	-	-	Ideal as an effects bass drum for all styles of music. Very sensitive with augmented lows.
12"x26"	BD1226	✓✓	✓✓	-	-	Main or effects bass drum. Added depth and lows works well in all musical settings.
13"x26"	BD1326	✓✓	✓✓	-	-	Main or effects bass drum. Increased volume and enhanced lows fits many musical styles.
14"x26"	BD1426	✓✓	✓✓	-	-	<b>Standard</b> - Classic size for deep low-end tone and great projection yet sensitive for all musical styles.
15"x26"	BD1526	✓✓	✓✓	-	-	<b>Alternative</b> - Outstanding projection with boosted low-end tone. Great for virtually all styles of music.
16"x26"	BD1626	✓✓	✓✓	-	-	<b>Deep</b> - Massive projection and explosive low-end presence. Full, rich tone at any dynamic level.

Snare Drums		Available Thickness and Woods					Plies ( ✓ Maple ✓ Birch ✓ Mahogany )
Size	Model	1 ply 7.5mm	4 ply 5mm	6 ply 7.5mm	8 ply 10mm	10 ply 12.5mm	Common Applications and Comments
4"x10"	SD4010	-	✓✓	✓✓	✓✓	-	Ideal effect snare for all styles. Wide tuning range with extreme sensitivity.
5.5"x10"	SD5510	-	✓✓	✓✓	✓✓	-	Ideal effect snare for all styles. Extended tuning range and added versatility.
6.5"x10"	SD6510	-	✓✓	✓✓	✓✓	-	Ideal effect snare for all styles. Full-bodied tone and maximum projection.
4"x12"	SD4012	-	✓✓	✓✓	✓✓	-	Ideal effect or main snare drum for all musical styles. Very crisp and sensitive.
5.5"x12"	SD5512	-	✓✓	✓✓	✓✓	-	Ideal effect or main snare drum for all musical styles. Fatter tone with improved projection.
6.5"x12"	SD6512	-	✓✓	✓✓	✓✓	-	Ideal effect or main snare drum for all musical styles. Wider tuning range; very versatile.
4"x13"	SD4013	-	✓✓	✓✓	✓✓	-	Classic piccolo size for all styles of music. Crisp full-range tone with outstanding projection.
5.5"x13"	SD5513	-	✓✓	✓✓	✓✓	-	Contemporary piccolo size for all musical styles. Excellent tone-to-depth ratio.
6.5"x13"	SD6513	-	✓✓	✓✓	✓✓	-	Power Piccolo size allows full projection and deep tone suitable for any music style.
4"x14"	SD4014	✓	✓✓	✓✓	✓✓	✓✓	Classic Be Bop size. Very versatile. Sensitive, full-bodied tone.
5.5"x14"	SD5514	✓	✓✓	✓✓	✓✓	✓✓	<b>Standard</b> - Favorite size for decades. Outstanding sensitivity and tone-to-depth ratio.
6.5"x14"	SD6514	✓	✓✓	✓✓	✓✓	✓✓	<b>Deep</b> - Popular choice for many professionals who desire added projection and full-bodied tone.

## Toms

Available Thickness and Woods

Plies ( ✓ Maple ✓ Birch ✓ Mahogany )

Size	Model	4 ply 5mm	6 ply 7.5mm	8 ply 10mm	10 ply 12.5mm	Common Applications and Comments
6.5"x8"	TT6508	✓✓✓	✓✓✓	-	-	<b>Standard</b> - Sensitive with controlled projection and rich tone. Complements any musical style.
7"x8"	TT0708	✓✓✓	✓✓✓	-	-	<b>Alternative</b> - Contemporary choice for multiple tom sets with full tone at all dynamic levels.
8"x8"	TT0808	✓✓✓	✓✓✓	-	-	<b>Deep</b> - The standard choice for professional multiple tom sets. Full-bodied tone with added projection.
7"x10"	TT0710	✓✓✓	✓✓✓	✓✓✓	-	<b>Standard</b> - Sensitive with controlled projection and full-bodied tone. Complements any musical style.
8"x10"	TT0810	✓✓✓	✓✓✓	✓✓✓	-	<b>Deep</b> - The Classic choice for professional sets. Full-bodied tone with added projection.
9"x10"	TT0910	✓✓✓	✓✓✓	✓✓✓	-	<b>Alternative</b> - Contemporary choice for all sets-ups. Full tone at all dynamic levels. Extremely versatile.
10"x10"	TT1010	✓✓✓	✓✓✓	✓✓✓	-	<b>Power</b> - Deep full-bodied tone with maximum projection yet sensitive. For all styles of music.
7"x12"	TT0712	✓✓✓	✓✓✓	✓✓✓	-	Controlled projection. Great sensitivity and full tone for any musical styles.
8"x12"	TT0812	✓✓✓	✓✓✓	✓✓✓	-	<b>Standard</b> - Classic size for all genres of music. Excellent tone-to-depth ratio with superb sensitivity.
9"x12"	TT0912	✓✓✓	✓✓✓	✓✓✓	-	<b>Alternative</b> - Contemporary choice for all sets and styles of music. Extremely versatile.
10"x12"	TT1012	✓✓✓	✓✓✓	✓✓✓	-	<b>Deep</b> - The standard choice for all styles of music. Full bodied tone, resonance, and projection.
11"x12"	TT1112	✓✓✓	✓✓✓	✓✓✓	-	Added depth gives great projection with a full-bodied tone. For all musical styles.
12"x12"	TT1212	✓✓✓	✓✓✓	✓✓✓	-	<b>Power</b> - Deep full resonant tone with maximum projection and good sensitivity. For all styles of music.
7"x13"	TT0713	✓✓✓	✓✓✓	✓✓✓	-	Sensitive with controlled projection and rich tone for all musical styles.
8"x13"	TT0813	✓✓✓	✓✓✓	✓✓✓	-	Sensitive with controlled projection and fuller tone for all musical styles.
9"x13"	TT0913	✓✓✓	✓✓✓	✓✓✓	-	<b>Standard</b> - The Classic size for all genres of music. Pronounced lows with added depth and projection.
10"x13"	TT1013	✓✓✓	✓✓✓	✓✓✓	-	<b>Alternative</b> - Contemporary choice for all sets and styles of music. Sensitive full tone with added projection.
11"x13"	TT1113	✓✓✓	✓✓✓	✓✓✓	-	<b>Deep</b> - Popular choice for full bodied tone, outstanding resonance and projection.
12"x13"	TT1213	✓✓✓	✓✓✓	✓✓✓	-	Added depth gives great projection with full bodied tone and good sensitivity. For all musical styles.
13"x13"	TT1313	✓✓✓	✓✓✓	✓✓✓	-	<b>Power</b> - Maximum projection with full bodied tone for all musical styles.
7"x14"	TT0714	✓✓✓	✓✓✓	✓✓✓	✓✓✓	Quick response with wide tuning range for all styles of music.
8"x14"	TT0814	✓✓✓	✓✓✓	✓✓✓	✓✓✓	Wider tuning range yet sensitive and full. Suitable for all musical styles.
9"x14"	TT0914	✓✓✓	✓✓✓	✓✓✓	✓✓✓	Greater projection, richness and tone. Great for all musical styles.
10"x14"	TT1014	✓✓✓	✓✓✓	✓✓✓	✓✓✓	<b>Standard</b> - The classic choice for multiple toms sets. Deep rich tone with strong projection.
11"x14"	TT1114	✓✓✓	✓✓✓	✓✓✓	✓✓✓	<b>Alternative</b> - Used as rack toms or "flying" floor toms. Extremely versatile.
12"x14"	TT1214	✓✓✓	✓✓✓	✓✓✓	✓✓✓	<b>Deep</b> - Used as rack toms or "flying" floor toms. Full bodied tone and outstanding projection.
13"x14"	TT1314	✓✓✓	✓✓✓	✓✓✓	✓✓✓	Used as rack toms or "flying" floor toms. Increased projection and wider tuning range.
14"x14"	TT1414	✓✓✓	✓✓✓	✓✓✓	✓✓✓	<b>Power</b> - Used as rack toms or "flying" floor toms. Maximum projection and depth.
7"x15"	TT0715	✓✓✓	✓✓✓	✓✓✓	-	Used mainly as effects toms. Sensitive response and controlled projection.
8"x15"	TT0815	✓✓✓	✓✓✓	✓✓✓	-	Used mainly as effects toms. Wider tonal range with great sensitivity.
9"x15"	TT0915	✓✓✓	✓✓✓	✓✓✓	-	Used as effects or main toms. Sensitive with controlled projection and rich tone.
10"x15"	TT1015	✓✓✓	✓✓✓	✓✓✓	-	Used as effects or main toms. Controlled projection. Sensitive with great tone.
11"x15"	TT1115	✓✓✓	✓✓✓	✓✓✓	-	Used as effects or main toms. Full range of tone with good projection.
12"x15"	TT1215	✓✓✓	✓✓✓	✓✓✓	-	<b>Standard</b> - The classic choice for multiple toms sets. Good projection and tone for all musical styles.
13"x15"	TT1315	✓✓✓	✓✓✓	✓✓✓	-	<b>Alternative</b> - Used as rack toms or "flying" floor toms. Deep full tone. Extremely versatile.
14"x15"	TT1415	✓✓✓	✓✓✓	✓✓✓	-	<b>Deep</b> - Used as rack toms or "flying" floor toms. Added projection and full tone; for all musical styles.
15"x15"	TT1515	✓✓✓	✓✓✓	✓✓✓	-	<b>Power</b> - Used as rack toms or "flying" floor toms. Maximum projection and tone; for all musical styles.
7"x16"	TT0716	✓✓✓	✓✓✓	✓✓✓	✓✓✓	Used mainly as effects toms. Controlled projection with warm tone.
8"x16"	TT0816	✓✓✓	✓✓✓	✓✓✓	✓✓✓	Used mainly as effects toms. Controlled projection with deeper tone.
9"x16"	TT0916	✓✓✓	✓✓✓	✓✓✓	✓✓✓	Used mainly as effects toms. Wider tuning range with good projection.
10"x16"	TT1016	✓✓✓	✓✓✓	✓✓✓	✓✓✓	Used as effects or main toms. Added depth, tone and projection. For all styles of music.
11"x16"	TT1116	✓✓✓	✓✓✓	✓✓✓	✓✓✓	Used as effects or main toms. Fuller tone and greater projection. For all musical styles.
12"x16"	TT1216	✓✓✓	✓✓✓	✓✓✓	✓✓✓	<b>Standard</b> - The classic choice for multiple toms sets. Good projection and tone for all musical styles.
13"x16"	TT1316	✓✓✓	✓✓✓	✓✓✓	✓✓✓	<b>Alternative</b> - Used as rack toms or "flying" floor toms. Deep full tone. Extremely versatile.
14"x16"	TT1416	✓✓✓	✓✓✓	✓✓✓	✓✓✓	<b>Deep</b> - Used as rack toms or "flying" floor toms. Added projection and full tone; for all musical styles.
15"x16"	TT1516	✓✓✓	✓✓✓	✓✓✓	✓✓✓	Used as rack toms or "flying" floor toms. Added projection and full bodied tone. For all styles of music.
16"x16"	TT1616	✓✓✓	✓✓✓	✓✓✓	✓✓✓	<b>Power</b> - Used as rack toms or "flying" floor toms. Maximum projection and tone; for all musical styles.

## Floor Toms

Available Thickness and Woods

Plies ( ✓ Maple ✓ Birch ✓ Mahogany )

Size	Model	4 ply 5mm	6 ply 7.5mm	8 ply 10mm	10 ply 12.5mm	Common Applications and Comments
7"x14"	FT0714	✓✓✓	✓✓✓	✓✓✓	✓✓✓	Ideal effects floor tom for all styles of music. Controlled projection with warm tone.
8"x14"	FT0814	✓✓✓	✓✓✓	✓✓✓	✓✓✓	Ideal effects floor tom for all styles of music. Controlled projection with deeper tone.
9"x14"	FT0914	✓✓✓	✓✓✓	✓✓✓	✓✓✓	Ideal effects floor tom for all styles of music. Increased projection with warm deep tone.
10"x14"	FT1014	✓✓✓	✓✓✓	✓✓✓	✓✓✓	Used as effects or main floor toms. Full tone and good projection. For all styles of music.
11"x14"	FT1114	✓✓✓	✓✓✓	✓✓✓	✓✓✓	Used as effects or main floor toms. Full warm tone with added projection. For all styles of music.
12"x14"	FT1214	✓✓✓	✓✓✓	✓✓✓	✓✓✓	Used as effects or main floor toms. Deeper tone and greater projection. For all styles of music.
13"x14"	FT1314	✓✓✓	✓✓✓	✓✓✓	✓✓✓	<b>Alternative</b> - Contemporary floor tom size. Deep full bodied tone with great projection. Very versatile..
14"x14"	FT1414	✓✓✓	✓✓✓	✓✓✓	✓✓✓	<b>Standard</b> - The Classic floor tom size. Maximum projection and tone. For all styles of music.
7"x15"	FT0715	✓✓✓	✓✓✓	✓✓✓	-	Ideal effects floor tom for all styles of music. Controlled projection with warm tone.
8"x15"	FT0815	✓✓✓	✓✓✓	✓✓✓	-	Ideal effects floor tom for all styles of music. Controlled projection with deeper tone.
9"x15"	FT0915	✓✓✓	✓✓✓	✓✓✓	-	Ideal effects floor tom for all styles of music. Increased projection with warm deep tone.
10"x15"	FT1015	✓✓✓	✓✓✓	✓✓✓	-	Used as effects or main floor toms. Full tone and good projection. For all styles of music.
11"x15"	FT1115	✓✓✓	✓✓✓	✓✓✓	-	Used as effects or main floor toms. Full warm tone with added projection. For all styles of music.
12"x15"	FT1215	✓✓✓	✓✓✓	✓✓✓	-	Used as effects or main floor toms. Deeper tone and greater projection. For all styles of music.
13"x15"	FT1315	✓✓✓	✓✓✓	✓✓✓	-	Used as effects or main floor toms. Full bodied tone with excellent projection. For all styles of music.
14"x15"	FT1415	✓✓✓	✓✓✓	✓✓✓	-	<b>Alternative</b> - Contemporary sized floor tom for all styles of music. Deep full-bodied tone w/great projection.
15"x15"	FT1515	✓✓✓	✓✓✓	✓✓✓	-	<b>Standard</b> - The Classic floor tom size for all musical styles. Maximum tone and projection.
7"x16"	FT0716	✓✓✓	✓✓✓	✓✓✓	✓✓✓	Ideal effects floor tom for all styles of music. Controlled projection with warm tone.
8"x16"	FT0816	✓✓✓	✓✓✓	✓✓✓	✓✓✓	Ideal effects floor tom for all styles of music. Controlled projection with deeper tone.
9"x16"	FT0916	✓✓✓	✓✓✓	✓✓✓	✓✓✓	Ideal effects floor tom for all styles of music. Increased projection with warm deep tone.
10"x16"	FT1016	✓✓✓	✓✓✓	✓✓✓	✓✓✓	Used as effects or main floor toms. Full tone and good projection. For all styles of music.
11"x16"	FT1116	✓✓✓	✓✓✓	✓✓✓	✓✓✓	Used as effects or main floor toms. Full warm tone with added projection. For all styles of music.
12"x16"	FT1216	✓✓✓	✓✓✓	✓✓✓	✓✓✓	Used as effects or main floor toms. Deeper tone and greater projection. For all styles of music.
13"x16"	FT1316	✓✓✓	✓✓✓	✓✓✓	✓✓✓	Used as effects or main floor toms. Full bodied tone with outstanding projection. For all styles of music.
14"x16"	FT1416	✓✓✓	✓✓✓	✓✓✓	✓✓✓	Used as effects or main floor toms. Rich full tone with excellent projection. For all styles of music.
15"x16"	FT1516	✓✓✓	✓✓✓	✓✓✓	✓✓✓	<b>Alternative</b> - Contemporary sized floor tom for all styles of music. Deep full bodied tone w/full projection.
16"x16"	FT1616	✓✓✓	✓✓✓	✓✓✓	✓✓✓	<b>Standard</b> - The Classic floor tom size for all styles of music. Maximum projection and tone.
7"x18"	FT0718	✓✓✓	✓✓✓	✓✓✓	✓✓✓	Ideal effects floor tom for all styles of music. Controlled projection with warm tone.
8"x18"	FT0818	✓✓✓	✓✓✓	✓✓✓	✓✓✓	Ideal effects floor tom for all styles of music. Controlled projection with deeper tone.
9"x18"	FT0918	✓✓✓	✓✓✓	✓✓✓	✓✓✓	Ideal effects floor tom for all styles of music. Increased projection with warm deep tone.
10"x18"	FT1018	✓✓✓	✓✓✓	✓✓✓	✓✓✓	Used as effects or main floor toms. Full tone and good projection. For all styles of music.
11"x18"	FT1118	✓✓✓	✓✓✓	✓✓✓	✓✓✓	Used as effects or main floor toms. Full warm tone with added projection. For all styles of music.
12"x18"	FT1218	✓✓✓	✓✓✓	✓✓✓	✓✓✓	Used as effects or main floor toms. Deeper tone and greater projection. For all styles of music.
13"x18"	FT1318	✓✓✓	✓✓✓	✓✓✓	✓✓✓	Used as effects or main floor toms. Full bodied tone with outstanding projection. For all styles of music.
14"x18"	FT1418	✓✓✓	✓✓✓	✓✓✓	✓✓✓	Used as effects or main floor toms. Rich full tone with excellent projection. For all styles of music.
15"x18"	FT1518	✓✓✓	✓✓✓	✓✓✓	✓✓✓	Used as effects or main floor toms. Maximum tone with exceptional projection. For all styles of music.
16"x18"	FT1618	✓✓✓	✓✓✓	✓✓✓	✓✓✓	Used as effects or main floor toms. Lush full tone with extended projection. For all styles of music.
17"x18"	FT1718	✓✓✓	✓✓✓	✓✓✓	✓✓✓	<b>Alternative</b> - Contemporary sized floor tom for all styles of music. Deep full bodied tone w/full projection.
18"x18"	FT1818	✓✓✓	✓✓✓	✓✓✓	✓✓✓	<b>Standard</b> - The Classic floor tom size for all styles of music. Maximum projection and tone.

## The Masterworks Finish

The Masterworks exterior finish represents the most complex offered within the industry today. Each drum will travel through a painstaking thirty-one step, week long process, that starts with a raw shell and ends with a one of a kind work of musical art. Masterworks drums are truly custom and offer endless finishing styles and color possibilities.

Solid color grain-thru finishes provide the look of translucent color encased by layer upon layer of clear lacquer. Exterior plies of Maple or Birch offer the perfect canvas for grain-thru finishing due to the natural beauty of the wood.

Mahogany exterior drums are best finished in natural or wine red grain-thru, or in a solid color opaque lacquer finish due to the dark natural coloring of the wood.

Fades and bursts offer a variation of standard grain-thru finishing, allowing you to blend two or more colors together, creating a look that can range from vintage to extremely cutting edge.

Our burnish finishes are a satin oil type natural stain, which colors the wood and creates a beautiful low-gloss alternative look and feel. Opaque finishes are available in any color imaginable with the option to add fine metallics and pearls to the finish. Large and micro-flake sparkle finishes are available also to recreate the classic 60's kit look.

The colors shown on the following pages are just a few of the endless options available when designing your Masterworks kit. We're also happy to match most any sample you might have to create a kit that's truly one of a kind.

*The kit below features a Silver to Blue Opaque Fade High Gloss Finish. All drums are 6 ply Birch. Sizes include an 18"x22" Bass Drum, 7"x10", 8"x12", 9"x13", 13"x14" and 15"x16" Toms and a 5.5"x14" CarbonFiber ply Masterworks Snare Drum.*





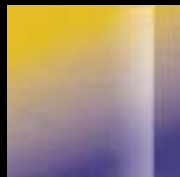
An Exclusive Thirty-One Step Process



# Sample Masterworks Lacquer Finishes



Orange Natural Fade



Yellow Blue Fade



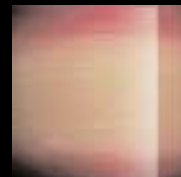
Burnt Natural Fade



Teal Natural Fade



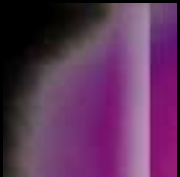
Radio Active Burst



Wine Burst



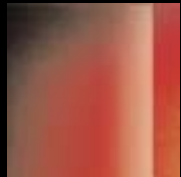
Tobacco Burst



Blue Purple Fade



Green Fade



Scarlet Fade



Seafoam Burst



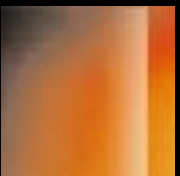
Lemon Burst



Shadow Burst



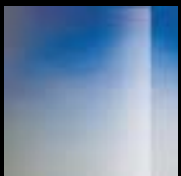
Tangerine



Rootbeer Fade



Antique Gold



Azure Fade



Cherry Sunburst



Antique Sunburst



Caramel Fade



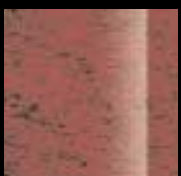
Lilac Burst



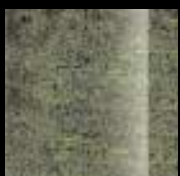
Antique White



Black Mist



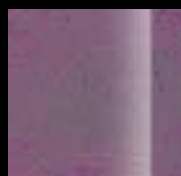
Burgundy Mist



Emerald Mist



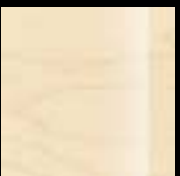
Liquid Amber



Purple Mist



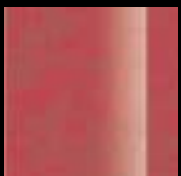
Red Mahogany



Natural



Teal Mist



Sequoia Red



Scarlet Mist



Chrome Yellow



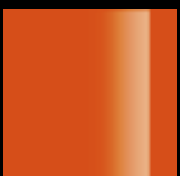
Arctic White



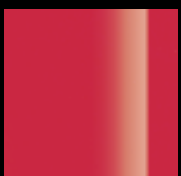
Forest Green



Bright Blue



Burnt Orange



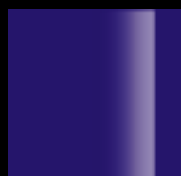
Candy Apple Red



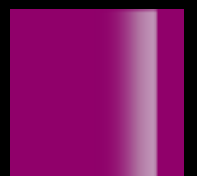
Gun Metal Blue



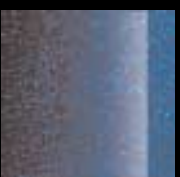
Piano Black



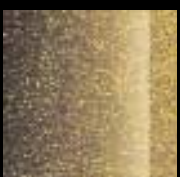
Majestic Purple



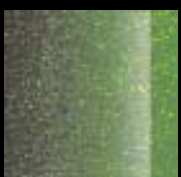
Ultra Violet



Blue Sparkle



Gold Sparkle



Green Sparkle



Silver Micro Flake



Champagne Micro Flake



Copper Metallic



Orange Sparkle



Red Marbleized



Gold Marbleized



Blue Marbleized



Silver Marbleized



Green Marble Fade



Purple Sparkle



Pink Sparkle



Teal Burnish



Wine Burnish



Walnut Burnish



Purple Burnish



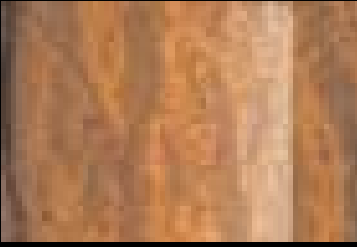
Amber Burnish



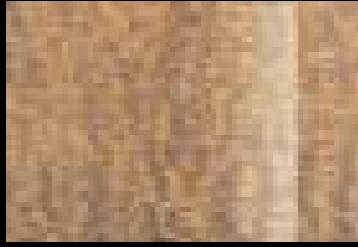
Orange Burnish



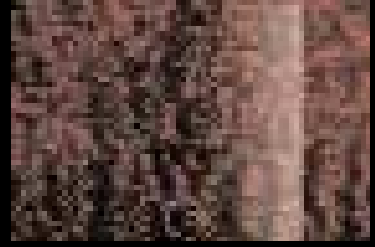
Green Burnish



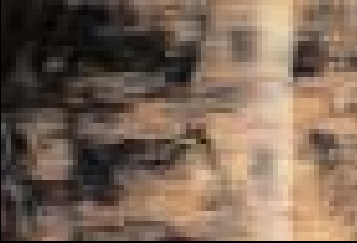
Bubinga



Burl Mahogany



Red Burl Mahogany



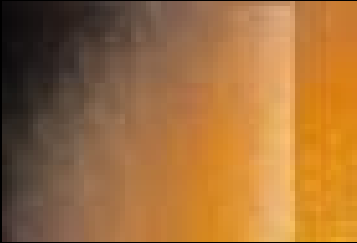
Tiger Wood



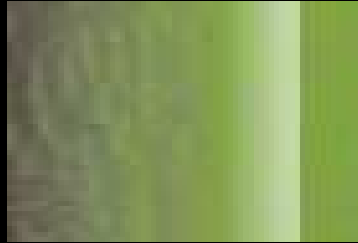
Natural Tamo



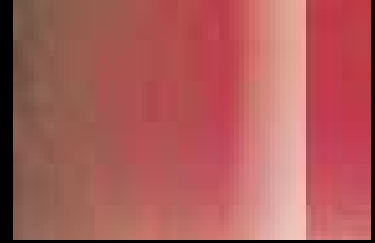
Teal Tamo



Tamo Tobacco Fade



See-Thru Green Tamo



Tamo Scarlet Fade



## Artisan Finishes

Masterworks Artisan Finishes are truly the ultimate expression of quality. These exotic real wood outer plies are formed with the shell offering stunning one of a kind looks to set your kit apart from all others. Four rare woods are available including Bubinga, Burl Mahogany, Tamo and Tiger Wood.

Bubinga and Tiger Wood are both native African woods and are only available with a natural clear high gloss lacquer finish due to the depth and darkness of the wood. Our highly figured Burl Mahogany is available as either a clear, high gloss natural finish, or with a beautiful

dark red stain applied before finishing, for the timeless look of supreme elegance. Tamo offers endless finishing options because its light, natural color, with exotic grain pattern, provides the perfect canvas. Most any grain-thru finishing technique, including solids, fades and sunburst colors, can be applied to Tamo allowing the natural beauty of the grain to create a remarkable visual. When choosing an Artisan finish please be aware that the Artisan outer ply is 2 plies thick. For example, a 4 ply Artisan shell would be made of 2 outer Artisan plies, plus two inner plies of your choice.

*The kit below features a Tigerwood Artisan Finish. All drums are 6 ply (4 ply Maple + 2 ply Artisan Tiger Wood). Sizes include an 18"x22" Bass Drum, 8"x10", 9"x12", and 11"x13" Toms, and 12"x14" and 14"x16" Floor Toms.*





### SuperHoop II

*Pearl's exclusive 2.3mm solid steel SuperHoop II allows the drum's full spectrum of tone to create the most lively, resonant, full bodied drum sound possible. Lighter in weight than our MasterCast hoops, SuperHoop II's are extremely sensitive, offer an increased rimshot area, and provide maximum sustain.*

### MasterCast Hoops

*By taking the die-cast hoop principle back to the drawing board for a total redesign, Pearl's new MasterCast hoops represent state-of-the-art for both function and looks. Die-cast hoops offer greater mass and slightly mask hi frequency overtones allowing you to hear the mid and low frequencies with greater presence. Players that hit harder and play extremely fast will hear greater separation between drums because MasterCast helps increase the focus of the drum and offers an extremely explosive dynamic to the overall tone.*

The choices available with a Masterworks kit do not stop with just the shell. You also have hardware options that effect both the look and sound of your kit. The most simple of these options is choosing chrome, gold or black chrome plated hardware to compliment your drums. Like most every facet of a Masterworks kit, the plating on the hardware is second to none. Our chroming is highly buffed, triple plated, and every step is at the control of a

Pearl master craftsman. For those

who prefer the stunning gleam of gold, our 24k gold plating is the standard in the industry for both beauty and durability.

The last of our three plating options offers the contemporary look of black chrome plating.

For certain exterior colors, there simply is no comparison to the contrast offered by black hardware.

Another choice to be made is between our new MasterCast die-cast hoops or our triple flanged, custom engraved

SuperHoop II's. Both offer the ultimate in tuning integrity, and both add their own characteristics to the overall sound of the drum. And speaking of tuning integrity, all Masterworks drums feature exclusive stainless steel tension bolts that have been machined, not pressed, to exacting tolerances. You'll be amazed at the smooth, precision feel of stainless steel compared to the pressed chrome plated tension bolts standard with most every hi-end kit available. Other exceptional standard features include our low mass bridge-style lugs with solid brass swivel nuts, our all new TH-100 omni-directional tom arms with patented Uni-Lock internal braking system, and our SP-30 Bass Drum Spurs with reversible rubber or spiked tipped feet.



*Chrome Plated SuperHoop II*



*24k Gold Plated MasterCast Hoops*



*Black chrome Plated SuperHoop II*

When you take a closer look, the details are what separate a good kit from a truly great one. Details like our die-cast bass drum claws with recessed key bolts that offer rubber hoop isolators to protect the finish and provide maximum resonance.

All Masterworks floor toms feature air suspension rubber feet to help counter act the resonance robbing effects of hard floor surfaces. In fact, every piece of hardware that touches a Masterworks shell has been designed to keep mass and weight to a minimum with the goal of maximum resonance in mind.

Masterworks offers you two tom mount options. Our new Optimount Suspension System mounts to the toms tension bolts, just under the hoop, and allows the drum to float totally isolated on rubber cushions. Since the drum is held at both top and bottom, Optimount is extremely stable while allowing the shell to resonate fully without restriction, thus drastically improving both resonance and sustain. Optimount will accomadate both SuperHoop II and MasterCast hoops for a truly universal fit.

Our second tom mounting option is our incredible Integrated Suspension System, or I.S.S. as it is known throughout the industry. I.S.S. attaches to the hoop, without touching the shell, providing the most simple, yet ultimately effective tom mounting system on the market today. I.S.S. attaches and removes quickly, without removing tension bolts or the drum head, increasing both the drum's sustain and resonance.



*Like every piece of hardware, our Low-mass tension lug with solid brass swivel nut has been designed to allow maximum resonance.*

*Machine turned stainless steel tension bolts provide an ultra-smooth precision feel when tensioning the drum. Nylon sleeves help protect the hoop's finish and allow the rod to turn without friction.*

*Our die-cast claws with recessed key bolts and rubber hoop isolators help eliminate the rough edges and protruding bolts common with other bass drum claws. The unique rubber isolator provides complete protection for your prized lacquer finished hoop while allowing maximum resonance.*



*Optimount Suspension System*



*Integrated Suspension System*



*Air Suspension Floor Tom Feet*



## Snare Drums

Masterworks snare drums offer you the ultimate canvas to either match your kit perfectly, or to add contrast to your kit using a different finish like one of our exotic Artisan outer plies. As with all Masterworks drums, you can choose the wood or combination of woods, thickness, size and hardware options to create a snare drum that is perfect for the style in which you play. You have the option to choose SuperHoop II or MasterCast rims, lug style, hardware plating, and throw-off. Some of the available options are shown on the facing page to give you a better idea of the all various options. If you prefer a metal snare drum, Pearl offers the largest selection of snare drums available and our latest Snare Drum Catalog will give you even greater options from which to choose.

Four throw-off options are available including our classic styled SR-017 shown above, our "Gladstone" style vertical pull SR-015 shown at right, our SR-020 Multi-Trace with four preset stops for off, on and 2 effects settings shown at far right, and our SR-018, which is a smaller version of our classic styled throw-off above. The SR-018 is required on all piccolo snare drums.



*SR-015 Gladstone Throw-off*



*SR-020 Multi-Trace Throw-off*



5.5x14" w/ Tube lugs, SuperHoop II's and gold plated hardware



4x14" w/ RL-05 lugs, MasterCast hoops and gold plated hardware



5.5x14" w/ Bridge lugs, MasterCast hoops and chrome plated hardware



5.5x14" w/ Bridge lugs, MasterCast Hoops and gold plated hardware



6.5x14" w/ CL-100 lugs, MasterCast hoops and chrome plated hardware



6.5x14" w/ Bridge lugs, SuperHoop II's and chrome plated hardware



5.5x14" w/ Bridge lugs, MasterCast Hoops and chrome plated hardware



5.5x14" w/ Bridge lugs, MasterCast Hoops and black chrome plated hardware



4x14" w/ RL-05 lugs, SuperHoop II's and chrome plated hardware



6.5x14" w/ CL-100 lugs, MasterCast Hoops and chrome plated hardware



5.5x14" w/ tube lugs, MasterCast Hoops and gold plated hardware



6.5x14" w/ CL-100 lugs, MasterCast Hoops and chrome plated hardware



5.5x14" CarbonFiber ply Shell w/ Bridge lugs, MasterCast Hoops and chrome hardware



5.5x13" w/ Bridge lugs, SuperHoop II's and chrome hardware



5.5x14" w/ Bridge lugs, MasterCast Hoops and black chrome hardware

CL-100 lugs are available for 6.5" and over drums.  
Bridge Style lugs are available on 5.5" and 6.5" drums only.  
RL-05 lugs are required on all drums under 5".  
Tube lugs are available on 5", 5.5", and 6.5" drums only.  
MasterCast hoops are only available on 14" diameter drums.  
SR-017, SR-015 and SR-020 Throw-offs are not available on drums less than 5" deep



Masterworks

Masterworks

REMO  
WEATHER KING  
BASS DRUM

Pearl



**KIT SPECIFICATION**



BASS DRUM	18"x22"	4ply COMPOSITE SHELL (2 MAHOGANY INNER + 2 MAPLE OUTER)
TOM	7"x8"	4ply COMPOSITE SHELL (2 MAHOGANY INNER + 2 MAPLE OUTER)
TOM	8"x10"	4ply COMPOSITE SHELL (2 MAHOGANY INNER + 2 MAPLE OUTER)
TOM	9"x10"	4ply COMPOSITE SHELL (2 MAHOGANY INNER + 2 MAPLE OUTER)
TOM	11"x13"	4ply COMPOSITE SHELL (2 MAHOGANY INNER + 2 MAPLE OUTER)
TOM	13"x14"	4ply COMPOSITE SHELL (2 MAHOGANY INNER + 2 MAPLE OUTER)
TOM	14"x16"	4ply COMPOSITE SHELL (2 MAHOGANY INNER + 2 MAPLE OUTER)
SNARE DRUM	4"x13"	4ply COMPOSITE SHELL (2 MAHOGANY INNER + 2 MAPLE OUTER)

**GREEN FADE**

C-855W	1	CYMBAL STAND
B-855W	6	BOOM STAND
H-985W	1	HI-HAT STAND
S-985W	1	SNARE STAND
T-980W	3	TOM STAND
P-101P	1	PEDAL
CH-70	1	CYMBAL CLAMP
APS-37	1	COWBELL HOLDER
ACB-10	1	ROCK BELL

**CHROME / MASTERCAST HOOPS**



**KIT SPECIFICATION**



BASS DRUM	18"x20"	4ply ARTISAN SHELL (2 MAPLE INNER + 2 TAMO OUTER)
TOM	8"x10"	4ply ARTISAN SHELL (2 MAPLE INNER + 2 TAMO OUTER)
TOM	9"x12"	4ply ARTISAN SHELL (2 MAPLE INNER + 2 TAMO OUTER)
FLOOR TOM	13"x14"	4ply ARTISAN SHELL (2 MAPLE INNER + 2 TAMO OUTER)
FLOOR TOM	15"x16"	4ply ARTISAN SHELL (2 MAPLE INNER + 2 TAMO OUTER)
SNARE DRUM	5.5"x14"	8ply ARTISAN SHELL (6 MAPLE INNER + 2 TAMO OUTER)

**TEAL TAMO ARTISAN**

C-855W	2	CYMBAL STAND
H-985W	1	HI-HAT STAND
S-985W	1	SNARE STAND
TC-980W	2	COMBINATION STAND
P-201P	1	PEDAL

**24k GOLD / MASTERCAST HOOPS**



**KIT SPECIFICATION**



BASS DRUM	18"x22"	6ply COMPOSITE SHELL (4 MAHOGANY INNER + 2 MAPLE OUTER)
TOM	9"x12"	6ply MAPLE SHELL
TOM	11"x14"	6ply MAPLE SHELL
TOM	13"x16"	6ply MAPLE SHELL
SNARE DRUM	6.5"x14"	M-8114D, MAPLE SHELL FREE FLOATING SYSTEM, #103 BLACK

**ANTIQUE WHITE**

C-855W	4	CYMBAL STAND
B-855W	1	BOOM STAND
H-885	1	HI-HAT STAND
S-985W	1	SNARE STAND
P-101P	1	PEDAL
AX-30	1	ADAPTER
TH-100	2	TOM HOLDER

**BLACK CHROME / SUPERHOOP II**







### KIT SPECIFICATION

BASS DRUM	16"x26"	4ply COMPOSITE SHELL (2 BIRCH INNER + 2 MAPLE OUTER)
TOM	7"x8"	6ply MAPLE
TOM	8"x10"	6ply MAPLE
TOM	9"x12"	6ply MAPLE
TOM	11"x13"	6ply MAPLE
TOM	15"x16"	6ply MAPLE
SNARE DRUM	6.5"x13"	6ply MAPLE

ANTIQUE GOLD

C-855W	3	CYMBAL STAND
B-855W	2	BOOM STAND
H-855	1	HI-HAT STAND
S-985W	1	SNARE STAND
TC-980W	1	COMBINATION STAND
T-900W	2	TOM STAND
P-101P	1	PEDAL
CH-70	1	CYMBAL CLAMP

CHROME / SUPERHOOP II



**KIT SPECIFICATION**



BASS DRUM	16"x26"	6ply COMPOSITE SHELL (2 MAHOGANY INNER + 4 MAPLE OUTER)
TOM	8"x8"	6ply MAPLE
TOM	8"x10"	6ply MAPLE
TOM	8"x12"	6ply MAPLE
FLOOR TOM	12"x14"	4ply MAPLE
FLOOR TOM	15"x16"	4ply MAPLE
FLOOR TOM	18"x18"	4ply MAPLE
SNARE DRUM	8"x14"	8ply MAPLE

**BRICK**

C-855W	1	CYMBAL STAND
B-855W	5	BOOM STAND
B-855WL	2	BOOM STAND, LONG
H-855	1	HI-HAT STAND
S-985W	1	SNARE STAND
TC-980W	1	COMBINATION STAND
T-980W	1	TOM STAND
P-202TW	1	DOUBLE PEDAL
CH-70	1	CYMBAL CLAMP
CLH-95A	1	CLOSED HI-HAT

**24k GOLD / MASTERCAST HOOPS**



**KIT SPECIFICATION**



BASS DRUM	18"x22"	6ply COMPOSITE SHELL (2 MAHOGANY INNER + 2 MAPLE + 2 BUBINGA OUTER)
TOM	8"x10"	6ply COMPOSITE SHELL (4 MAPLE INNER + 2 BUBINGA OUTER)
TOM	9"x12"	6ply COMPOSITE SHELL (4 MAPLE INNER + 2 BUBINGA OUTER)
TOM	13"x14"	6ply COMPOSITE SHELL (4 MAPLE INNER + 2 BUBINGA OUTER)
TOM	14"x16"	6ply COMPOSITE SHELL (4 MAPLE INNER + 2 BUBINGA OUTER)
SNARE DRUM	5.5"x14"	10ply COMPOSITE SHELL (8 MAPLE INNER + 2 BUBINGA OUTER)

**BUBINGA ARTISAN**

C-855W	1	CYMBAL STAND
B-855W	4	BOOM STAND
H-885	1	HI-HAT STAND
S-985W	1	SNARE STAND
T-900W	1	TOM STAND
P-102TW	1	DOUBLE PEDAL
CH-70	1	CYMBAL CLAMP
TH-100I	2	TOM HOLDER
CLH-95A	1	CLOSED HI-HAT
DCL-90	1	HI-HAT DROP CLUTCH

**24k GOLD / MASTERCAST HOOPS**







**KIT SPECIFICATION**



BASS DRUM	18"x22"	8ply COMPOSITE SHELL (6 MAHOGANY INNER + 2 BIRCH OUTER)
BASS DRUM	18"x18"	8ply COMPOSITE SHELL (6 MAHOGANY INNER + 2 BIRCH OUTER)
TOM	7"x8"	4ply BIRCH
TOM	8"x10"	4ply BIRCH
TOM	9"x12"	4ply BIRCH
TOM	9"x10"	4ply BIRCH
TOM	8"x8"	4ply BIRCH
FLOOR TOM	13"x13"	4ply COMPOSITE SHELL (2 MAHOGANY INNER + 2 BIRCH OUTER)
FLOOR TOM	14"x14"	4ply COMPOSITE SHELL (2 MAHOGANY INNER + 2 BIRCH OUTER)
FLOOR TOM	15"x15"	4ply COMPOSITE SHELL (2 MAHOGANY INNER + 2 BIRCH OUTER)
SNARE DRUM	5.5"x14"	10ply BIRCH
SNARE DRUM	5"x13"	SL-513P STEEL SHELL

**PURPLE METALLIC**

B-855W	8	BOOM STAND
B-855WL	1	BOOM STAND, LONG
H-855	1	HI-HAT STAND
S-985W	2	SNARE STAND
T-980W	2	TOM STAND
P-102TW	2	DOUBLE PEDAL
CH-70	1	CYMBAL CLAMP
CH-88	1	CYMBAL HOLDER
TH-100I	1	TOM HOLDER

**BLACK NICKEL / MASTERCAST HOOPS**



**KIT SPECIFICATION**



BASS DRUM	18"x22"	10ply MAPLE
TOM	9"x10"	6ply MAPLE
TOM	10"x12"	6ply MAPLE
TOM	14"x14"	6ply MAPLE
SNARE DRUM	5.5"x14"	STEEL SHELL S-5514

**SMOKE MICRO FLAKE**

C-855W	1	CYMBAL STAND
B-855W	2	BOOM STAND
H-985W	1	HI-HAT STAND
S-985W	1	SNARE STAND
TC-980W	1	COMBINATION STAND
P-201P	1	PEDAL
TH-100I	2	TOM HOLDER

**CHROME / MASTERCAST HOOPS**



**KIT SPECIFICATION**



BASS DRUM	18"x20"	6ply COMPOSITE SHELL (5 MAHOGANY INNER + 1 BURL MAHOGANY OUTER)
TOM	8"x10"	4ply COMPOSITE SHELL (3 MAHOGANY INNER + 1 BURL MAHOGANY OUTER)
TOM	9"x12"	4ply COMPOSITE SHELL (3 MAHOGANY INNER + 1 BURL MAHOGANY OUTER)
FLOOR TOM	14"x14"	4ply COMPOSITE SHELL (3 MAHOGANY INNER + 1 BURL MAHOGANY OUTER)
SNARE DRUM	5.5"x14"	8ply ARTISAN SHELL (6 MAPLE INNER+ 2 BURL MAHOGANY OUTER)

**RED BURL MAHOGANY ARTISAN**

C-855W	3	CYMBAL STAND
H-885W	1	HI-HAT STAND
S-985W	1	SNARE STAND
TH-100IG	2	TOM HOLDER
P-101P	1	PEDAL

**24k GOLD / MASTERCAST HOOPS**





**KIT SPECIFICATION**



BASS DRUM	16"x22"	4ply COMPOSITE SHELL (2 MAPLE INNER + 2 TAMO OUTER)
TOM	8"x10"	4ply COMPOSITE SHELL (2 MAPLE INNER + 2 TAMO OUTER)
TOM	9"x12"	4ply COMPOSITE SHELL (2 MAPLE INNER + 2 TAMO OUTER)
TOM	12"x14"	4ply COMPOSITE SHELL (2 MAPLE INNER + 2 TAMO OUTER)
FLOOR TOM	14"x16"	4ply COMPOSITE SHELL (2 MAPLE INNER + 2 TAMO OUTER)
SNARE DRUM	4"x14"	4ply COMPOSITE SHELL (2 MAPLE INNER + 2 TAMO OUTER)

**NATURAL TAMO ARTISAN**

B-855W	6	BOOM STAND
H-885	1	HI-HAT STAND
S-985W	1	SNARE STAND
TC-980W	1	COMBINATION STAND
P-101P	1	PEDAL
AX-30	1	ADAPTER
TH-100S	2	TOM HOLDER

**CHROME / MASTERCAST HOOPS**



**KIT SPECIFICATION**



BASS DRUM	18"x22"	4ply MAPLE
TOM	7"x8"	4ply MAPLE
TOM	8"x10"	4ply MAPLE
TOM	9"x12"	4ply MAPLE
TOM	11"x14"	4ply MAPLE
TOM	13"x16"	4ply MAPLE
SNARE DRUM	5.5"x14"	10ply MAPLE

**PURPLE MARBLIZER**

B-855W	6	BOOM STAND
B-855WL	1	BOOM STAND, LONG
H-885	1	HI-HAT STAND
S-985W	1	SNARE STAND
T-900W	2	TOM STAND
TC-980W	1	COMBINATION STAND
P-102TW	1	DOUBLE PEDAL
CH-70	1	CYMBAL CLAMP
TH-100I	1	TOM HOLDER
CLH-95A	1	CLOSED HI-HAT

**24k GOLD / MASTERCAST HOOPS**



**KIT SPECIFICATION**

BASS DRUM	14"x22"	6ply COMPOSITE SHELL (4 MAHOGANY INNER + 2 MAPLE OUTER)
TOM	8"x13"	6ply COMPOSITE SHELL (4 MAHOGANY INNER + 2 MAPLE OUTER)
FLOOR TOM	12"x15"	6ply COMPOSITE SHELL (4 MAHOGANY INNER + 2 MAPLE OUTER)
FLOOR TOM	16"x16"	6ply COMPOSITE SHELL (4 MAHOGANY INNER + 2 MAPLE OUTER)
SNARE DRUM	6.5"x14"	6ply COMPOSITE SHELL (4 MAHOGANY INNER + 2 MAPLE OUTER)

**GREEN SPARKLE**

C-855W	1	CYMBAL STAND
H-855	1	HI-HAT STAND
S-985W	1	SNARE STAND
TC-980W	1	COMBINATION STAND
P-201P	1	PEDAL
CHB-88	1	CYMBAL HOLDER, BASS DRUM

**CHROME / SUPERHOOP II**



*Pearl*®

Masterworks drums are completely custom, totally handmade Pearl Drums. Availability, processes and specifications are subject to change without notice. For more information on Masterworks or any Pearl product, see your local authorized Pearl dealer or visit our world wide web site at [www.pearldrums.com](http://www.pearldrums.com). In the USA you can also write to Pearl Corporation, 549 Metroplex Drive, Nashville, TN 37211. Copyright © 1999 Pearl Corporation. Printed 7/99 in the USA.

Item # MW799